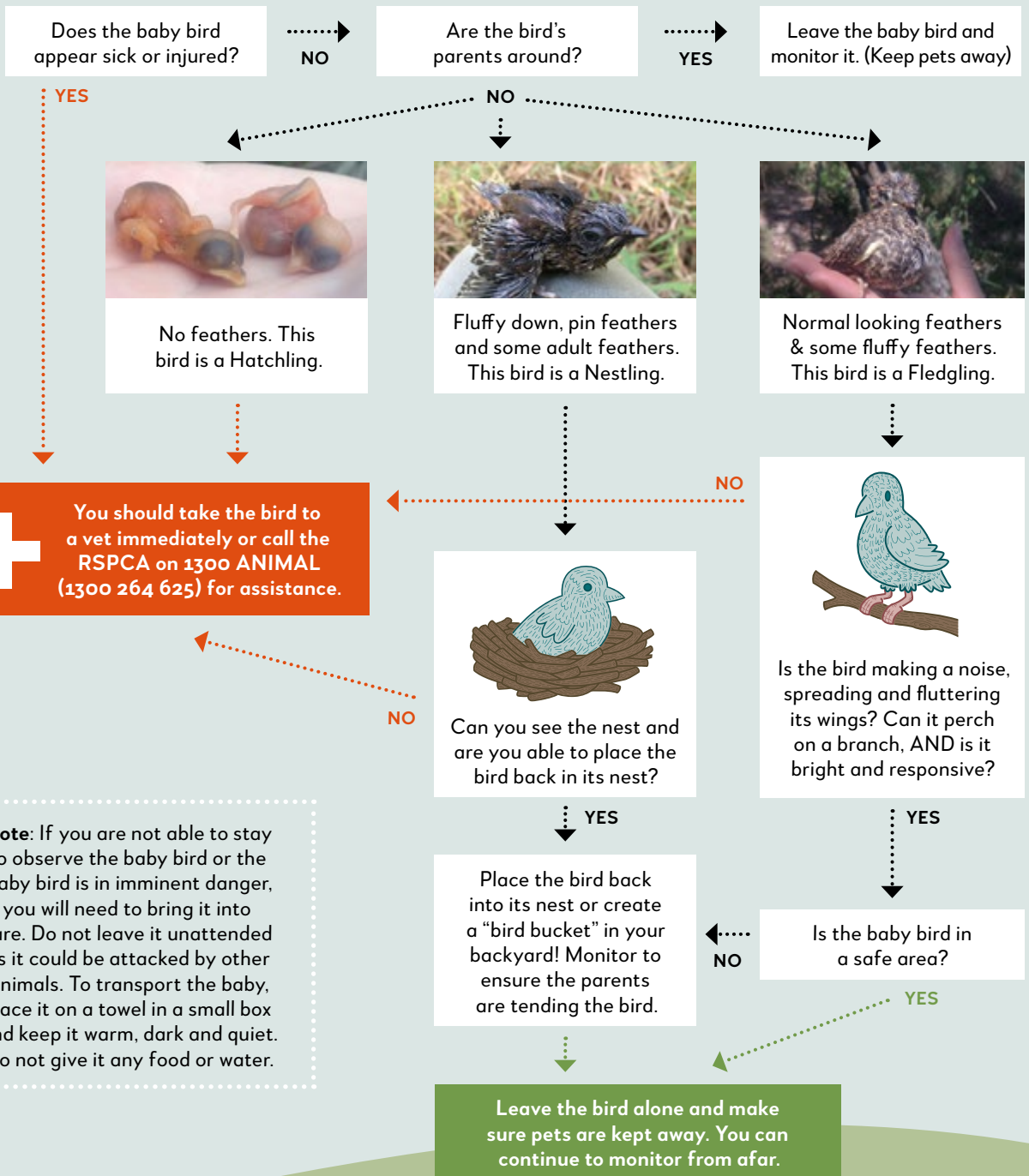




So you found a baby bird

Now what?



Note: If you are not able to stay to observe the baby bird or the baby bird is in imminent danger, you will need to bring it into care. Do not leave it unattended as it could be attacked by other animals. To transport the baby, place it on a towel in a small box and keep it warm, dark and quiet. Do not give it any food or water.

It is important to note that **brush turkey chicks** are not lost or orphaned; they do not receive any parental care after hatching. These babies need to be left alone to disperse on their own accord, unless of course they appear to be sick or injured.

HATCHLING, NESTLING AND FLEDGLING PHOTOS: WILLIAM FEENEY